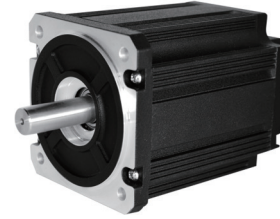


80BSA Series

General Specification

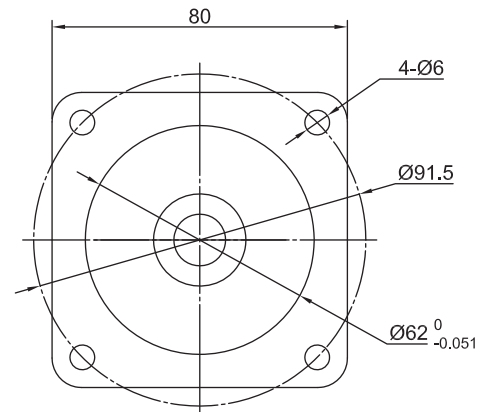
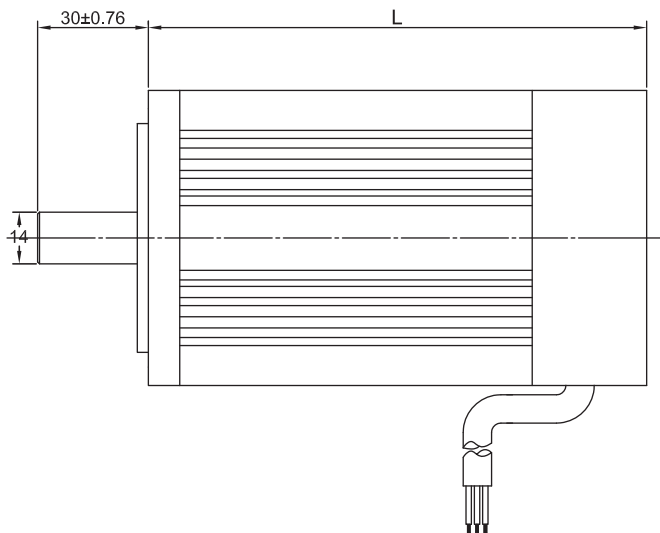
Winding type 绕组连续方式	YWE
Hall effect angle 霍尔分布角度	120 Deg. Electrical angle
Radial play 径向间隙	0.025mm /460g
End play 轴向间隙	0.025mm /400g
Max. radial force 径向最大承受力	220N(20mm from the flange)
Max. axial force 轴向最大承受力	60N
Insulation class 绝缘等级	B
Dielectric strength 介电强度	1000VDC for one minute,10mA
Insulation resistance 绝缘电阻	50MΩ min., 500VDC



Performance Data

Model 型号	Units	80BSA098D025X-01	80BSA122D030X-01	80BSA150I020X-01	80BSA160I025X-01
Number of poles 极数				8	
Number of phase 相数				3	
Rated voltage 额定电压	VDC	48	48	310	310
Rated speed 额定转速	RPM	2500	3000	2000	2500
Continuous stall torque 持续堵转转矩	N.m	1.56	2.9	4.2	4.8
Rated torque 额定转矩	N.m	1.3	2.4	3.5	4
Rated power 额定功率	W	340	754	733	1047
Peak torque 峰值转矩	N.m	3.8	7.1	10.5	12
Peak current 峰值电流	A	28.3	62.8	9.5	13.5
Torque constant 转矩常数	Nm/A	0.121	0.068	0.042	0.121
Back E.M.F 反电势	V/KRPM	10	8.8	77.5	65.7
Rotor inertia 转动惯量	Kg.cm ²	1.05	1.82	2.63	2.97
Body length 电机长度	mm	98	122	150	160
Voltage range 电压范围	VDC			12~310	
Speed Range 转速范围	RPM			1000~3000	
Weight 重量	Kg	3	3.5	4.1	4.3

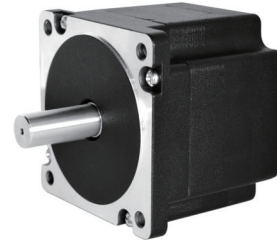
Dimensions in mm



86BSA Series (8Poles 8 极电机)

General Specification

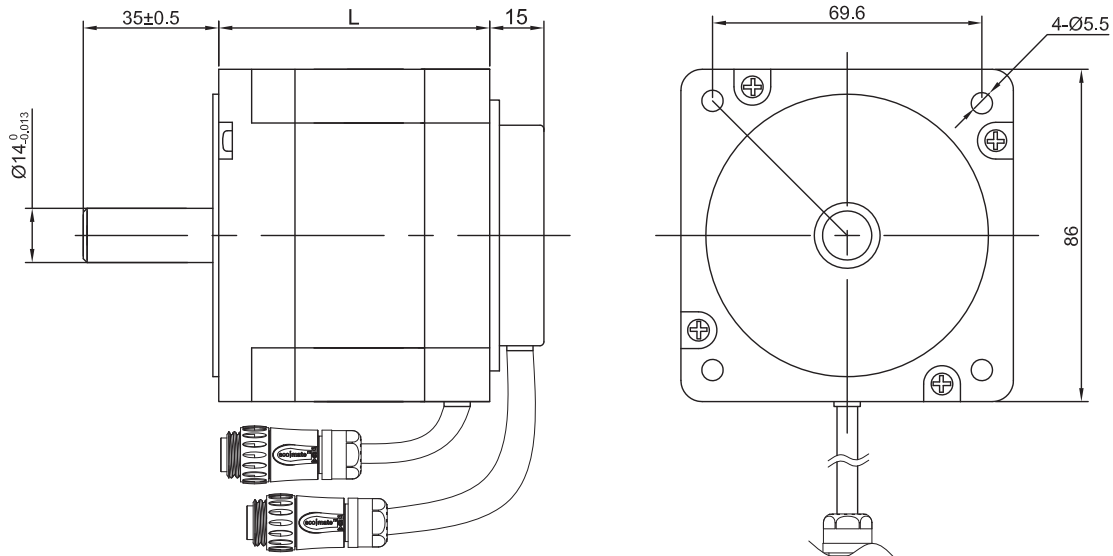
Winding type 绕组连续方式	YWE
Hall effect angle 霍尔分布角度	120 Deg. Electrical angle
Radial play 径向间隙	0.02mm /460g
End play 轴向间隙	0.08mm /400g
Max. radial force 径向最大承受力	220N(20mm from the flange)
Max. axial force 轴向最大承受力	60N
Insulation class 绝缘等级	B
Dielectric strength 介电强度	1000VDC for one minute,10mA
Insulation resistance 绝缘电阻	50MΩ min., 500VDC



Performance Data

Model 型号	Units	86BSA058D 010X-01	86BSA058D 010X-01	86BSA071D 010X-01	86BSA071D 030X-01	86BSA098D 010X-01	86BSA098D 030X-01	86BSA125D 010X-01	86BSA125D 030X-01
Number of poles 极数		8							
Number of phase 相数		3							
Rated voltage 额定电压	VDC	48							
Rated speed 额定转速	RPM	1000	3000	1000	3000	1000	3000	3000	3000
Continuous stall torque 持续堵转转矩	N.m	0.42	0.42	0.84	0.84	1.68	1.68	2.2	2.2
Rated torque 额定转矩	N.m	0.35	0.35	0.7	0.7	1.4	1.4	2.1	2.1
Rated power 额定功率	W	24.3	110	73	220	147	440	220	660
Peak torque 峰值转矩	N.m	1.05	1.05	2.1	2.1	4.2	4.2	6.3	6.3
Peak current 峰值电流	A	2.86	8.6	5.7	17.1	11.4	34.3	17.2	51.5
Torque constant 转矩常数	Nm/A	0.324	0.12	0.324	0.12	0.324	0.12	0.324	0.12
Back E.M.F 反电势	V/KRPM	34.28	12.63	34.28	12.63	34.28	12.63	34.28	12.63
Rotor inertia 转动惯量	Kg.cm ²	0.4	0.4	0.8	0.8	1.6	1.6	2.4	2.4
Body length 电机长度	mm	58	58	71	71	98	98	125	125
Voltage range 电压范围	VDC	12~310							
Speed Range 转速范围	RPM	1000~3000							
Weight 重量	Kg	1.5	1.5	1.9	1.9	2.6	2.6	4	4

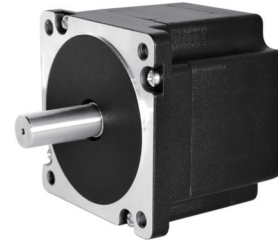
Dimensions in mm



86BSD Series (4Poles 4 极电机)

General Specification

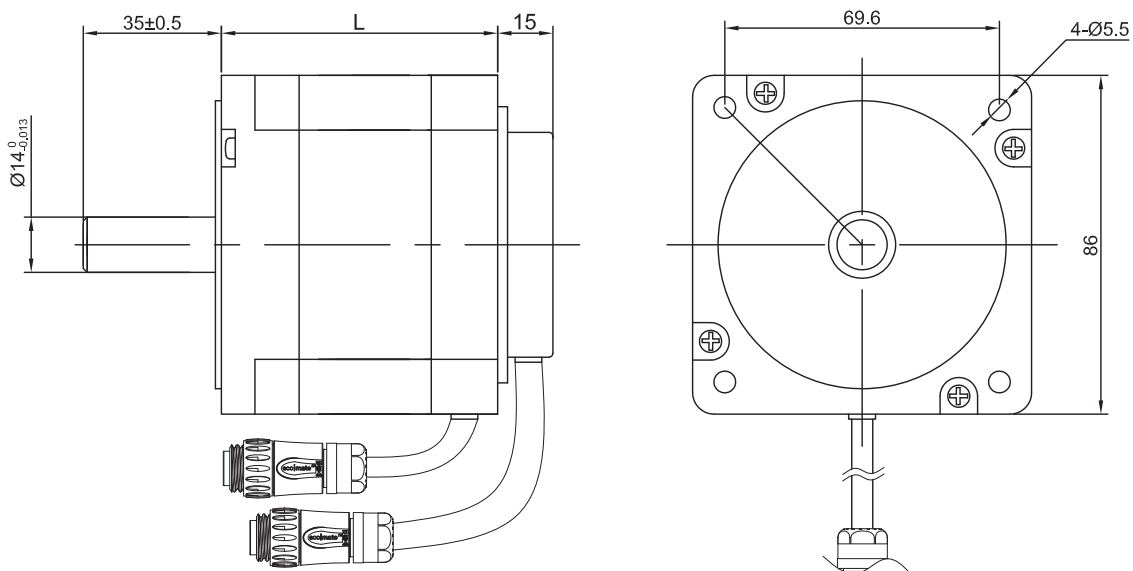
Winding type 绕组连续方式	YWE
Hall effect angle 霍尔分布角度	120 Deg. Electrical angle
Radial play 径向间隙	0.02mm /460g
End play 轴向间隙	0.08mm /400g
Max. radial force 径向最大承受力	220N(20mm from the flange)
Max. axial force 轴向最大承受力	60N
Insulation class 绝缘等级	B
Dielectric strength 介电强度	500VDC for one minute,5mA
Insulation resistance 绝缘电阻	100MΩ min., 500VDC



Performance Data

Model 型号	Units	86BSD071B 020X-01	86BSD071D 040X-01	86BSD098D 020X-01	86BSD098I 060X-01	86BSD125D 020X-01	86BSD125I 060X-01
Number of poles 极数		8					
Number of phase 相数		3					
Rated voltage 额定电压	VDC	24	48	48	310	48	310
Rated speed 额定转速	RPM	2000	4000	2000	6000	2000	6000
Continuous stall torque 持续堵转转矩	N.m	0.84	0.84	1.68	1.68	2.52	2.2
Rated torque 额定转矩	N.m	0.7	0.7	1.4	1.4	2.1	2
Rated power 额定功率	W	147	293	293	879	440	1256
Peak torque 峰值扭矩	N.m	2.1	2.1	4.2	4.2	6.3	6
Peak current 峰值电流	A	25	25	24.7	10.8	36	15.4
Torque constant 转矩常数	Nm/A	0.084	0.084	0.17	0.39	0.175	0.39
Back E.M.F 反电势	V/KRPM	8.9	8.9	18	41.3	18.5	41.3
Rotor inertia 转动惯量	Kg.cm ²	0.7	0.7	1.4	1.4	2.1	2.1
Body length 电机长度	mm	71	71	98	98	125	125
Voltage range 电压范围	VDC	12~310					
Speed Range 转速范围	RPM	2000~6000					
Weight 重量	Kg	1.9	1.9	2.6	2.6	4	4

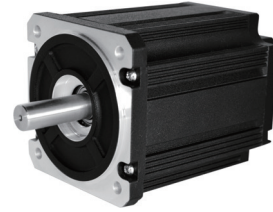
Dimensions in mm



90BSA Series (8Poles 8 极电机)

General Specification

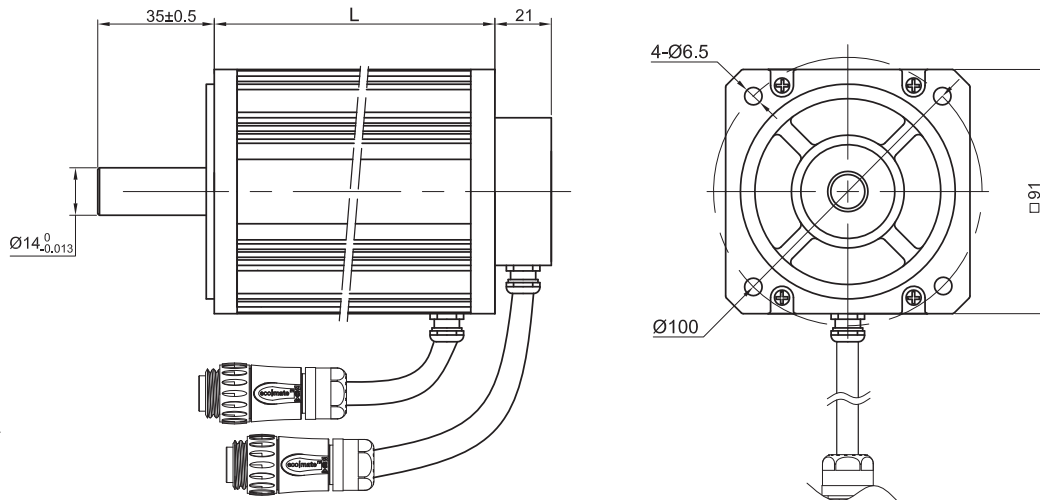
Winding type 绕组连续方式	YWE
Hall effect angle 霍尔分布角度	120 Deg. Electrical angle
Radial play 径向间隙	0.02mm /460g
End play 轴向间隙	0.08mm /450g
Max. radial force 径向最大承受力	220N(20mm from the flange)
Max. axial force 轴向最大承受力	60N
Insulation class 绝缘等级	B
Dielectric strength 介电强度	500VDC for one minute,5mA
Insulation resistance 绝缘电阻	50MΩ min., 500VDC



Performance Data

Model 型号	Units	90BSA068A 030X-01	90BSA075B 030X-01	90BSA088D 010X-01	90BSA088D 030X-01	90BSA108D 010X-01	90BSA108D 030X-01	90BSA136I 010X-01	90BSA136I 030X-01
Number of poles 极数		8							
Number of phase 相数		3							
Rated voltage 额定电压	VDC	12	24	48	48	48	48	310	310
Rated speed 额定转速	RPM	3000	3000	1000	3000	1000	3000	1000	3000
Continuous stall torque 持续堵转转矩	N.m	0.6	0.8	1	1	1.9	1.9	3	3
Rated torque 额定转矩	N.m	0.5	0.7	0.85	0.85	1.7	1.7	2.5	2.5
Rated power 额定功率	W	157	220	89	267	178	534	262	785
Peak torque 峰值转矩	N.m	1.5	2.1	2.55	2.55	5.1	5.1	7.5	7.5
Peak current 峰值电流	A	50.4	70.5	7.9	21.4	16.9	42.8	4	9.7
Torque constant 转矩常数	Nm/A	0.03	0.03	0.324	0.119	0.302	0.119	1.89	0.77
Back E.M.F 反电势	V/KRPM	3.15	3.15	34.3	12.6	32	12.6	200	81.5
Rotor inertia 转动惯量	Kg.cm ²	0.6	0.8	1.2	1.2	1.8	1.8	2.65	2.65
Body length 电机长度	mm	68	75	88	88	108	108	136	136
Voltage range 电压范围	VDC	12~80			48~310				
Speed Range 转速范围	RPM	1000~3000							
Weight 重量	Kg	1.4	1.7	2.1	2.1	2.6	2.6	4.1	4.1

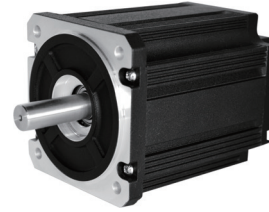
Dimensions in mm



90BSB Series (4Poles 4 极电机)

General Specification

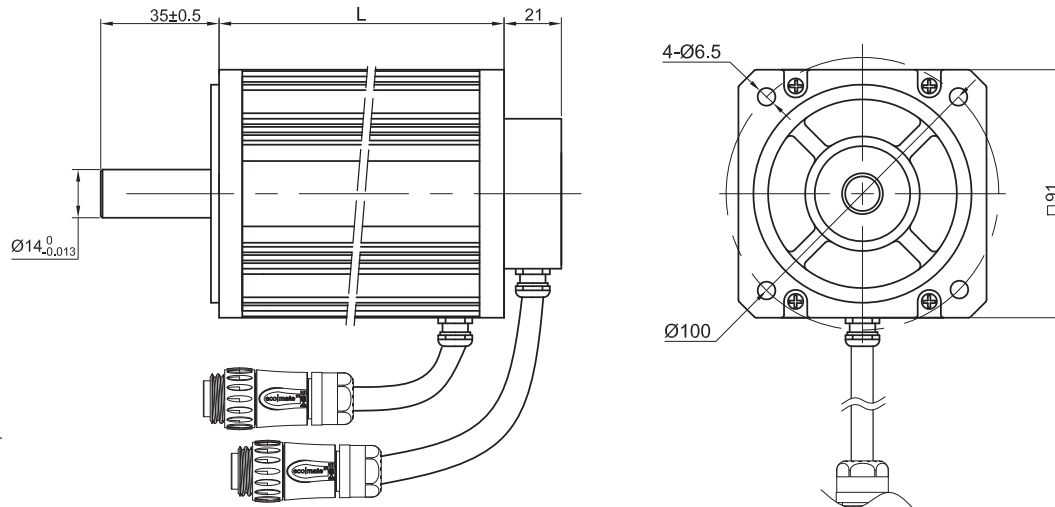
Winding type 绕组连续方式	YWE
Hall effect angle 霍尔分布角度	120 Deg. Electrical angle
Radial play 径向间隙	0.02mm /460g
End play 轴向间隙	0.08mm /450g
Max. radial force 径向最大承受力	220N(20mm from the flange)
Max. axial force 轴向最大承受力	60N
Insulation class 绝缘等级	B
Dielectric strength 介电强度	1000VDC for one minute,10mA
Insulation resistance 绝缘电阻	50MΩ min., 500VDC



Performance Data

Model 型号	Units	90BSB068B 040X-01	90BSB075D 040X-01	90BSB088D 020X-01	90BSB088D 060X-01	90BSB108D 020X-01	90BSB108D 040X-01	90BSB136I 020X-01	90BSB136I 060X-01	
Number of poles 极数						4				
Number of phase 相数						3				
Rated voltage 额定电压	VDC	24	48	48	48	48	48	310	310	
Rated speed 额定转速	RPM	4000	4000	2000	6000	2000	4000	2000	6000	
Continuous stall torque 持续堵转转矩	N.m	0.6	0.8	1.2	1.2	1.7	1.7	2.2	2.2	
Rated torque 额定转矩	N.m	0.5	0.7	1	1	1.6	1.6	2	2	
Rated power 额定功率	W	209	293	209	628	335	628	524	1256	
Peak torque 峰值转矩	N.m	1.5	2.1	3	3	4.8	4.5	7.5	6	
Peak current 峰值电流	A	17.3	24.2	17.4	35	27.8	51.8	6.6	14.7	
Torque constant 转矩常数	Nm/A	0.087	0.087	0.172	0.086	0.172	0.087	1.137	0.409	
Back E.M.F 反电势	V/KRPM	9.2	9.2	18.24	9.06	18.24	9.2	120.3	43.3	
Rotor inertia 转动惯量	kg.cm ²	0.45	0.6	0.9	0.9	2.1	2.1	2.95	2.95	
Body length 电机长度	mm	68	75	88	88	108	108	136	136	
Voltage range 电压范围	VDC	12~80				48~310				
Speed Range 转速范围	RPM					2000~6000				
Weight 重量	Kg	1.4	1.7	2.1	2.1	2.6	2.6	4.1	4.1	

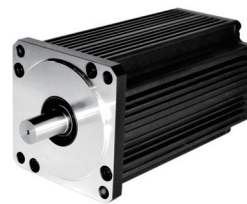
Dimensions in mm



110BSA Series

General Specification

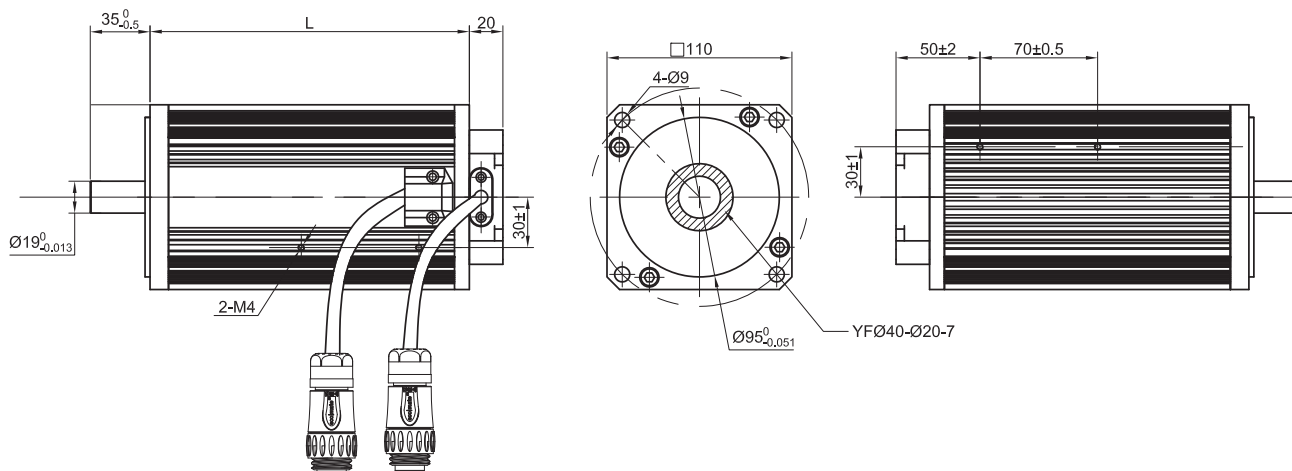
Winding type 绕组连续方式	YWE
Hall effect angle 霍尔分布角度	120 Deg. Electrical angle
Radial play 径向间隙	0.02mm /460g
End play 轴向间隙	0.08mm /450g
Max. radial force 径向最大承受力	220N(20mm from the flange)
Max. axial force 轴向最大承受力	60N
Insulation class 绝缘等级	B
Dielectric strength 介电强度	1800VDC for one minute,20mA
Insulation resistance 绝缘电阻	50M Ω min., 1000VDC



Performance Data

Model 型号	Units	110BSA125I030X-01	110BSA155I030X-01	110BSA185I030X-01	110BSA210I030X-01
Number of poles 极数				8	
Number of phase 相数				3	
Rated voltage 额定电压	VDC	310	310	310	310
Rated speed 额定转速	RPM	3000	3000	3000	3000
Continuous stall torque 持续堵转转矩	N.m	2.2	4.8	7.164	8.592
Rated torque 额定转矩	N.m	2	4	6	7.16
Rated power 额定功率	W	625	1250	1885	2249
Peak torque 峰值扭矩	N.m	6	12	17.91	21.48
Peak current 峰值电流	A	8	14.7	26	31
Torque constant 转矩常数	Nm/A	0.77	0.77	0.689	0.689
Back E.M.F 反电势	V/KRPM	54.8	54.8	54.8	54.8
Rotor inertia 转动惯量	g.cm ²	1.9	3.3	5	5.9
Body length 电机长度	mm	125	155	185	210
Voltage range 电压范围	VDC			48~310	
Speed Range 转速范围	RPM			1000~3000	
Weight 重量	Kg	4.8	5.2	5.5	6

Dimensions in mm



130BSA Series

General Specification

Winding type 绕组连续方式	YWE
Hall effect angle 霍尔分布角度	120 Deg. Electrical angle
Radial play 径向间隙	0.02mm @460g
End play 轴向间隙	0.08mm @450g
Max. radial force 径向最大承受力	220N(20mm from the flange)
Max. axial force 轴向最大承受力	60N
Insulation class 绝缘等级	B
Dielectric strength 介电强度	1800VDC for one minute, 20mA
Insulation resistance 绝缘电阻	50M Ω min., 1000VDC



Performance Data

Model 型号	Units	130BSA120D030X-01	130BSA155I030X-01
Number of poles 极数		4	
Number of phase 相数		3	
Rated voltage 额定电压	VDC	48	310
Rated speed 额定转速	RPM	3000	3000
Continuous stall torque 持续堵转转矩	N.m	2.8	5.5
Rated torque 额定转矩	N.m	2.5	5
Rated power 额定功率	W	785	1570
Peak torque 峰值转矩	N.m	7.5	15
Peak current 峰值电流	A	70	21.7
Torque constant 转矩常数	Nm/A	0.012	0.077
Back E.M.F 反电势	V/KRPM	8.93	8.93
Rotor inertia 转动惯量	g.cm ²	2.4	4.8
Body length 电机长度	mm	120	155
Voltage range 电压范围	VDC		48~310
Speed Range 转速范围	RPM		1000~3000
Weight 重量	Kg	5	7

Dimensions in mm

